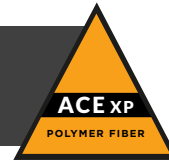


## ASPHALT SOLUTIONS



# ACE XP™ Parking Lots

Commercial pavements face constant stress from delivery trucks and trash trucks. For sites with heavy traffic, cracking can result from a variety of causes. If the pavement is not up to the task, finding an affordable solution becomes a big challenge. Owners can now elect for a faster, less expensive fix using ACE XP™ reinforced mix or one of the other Surface Tech polymer aramid solutions, such as ARMI™ for crack relief or REARM HR™ to increase the RAP content. Any one of these solutions can provide the strength, durability and long life owners want in their asphalt pavements.

### » Ease of Use

ARMI and ACE XP are easily adopted into any asphalt plant production through auto-dosing equipment supplied by Surface Tech.

Unlike other interlayers, ARMI keeps production and installation in the hands of the producer and paver - with no changes to placement or compaction.



### » Cost Savings

A 6" pavement with ACE XP performs at the same traffic load as an 8" non-reinforced pavement.

If surface mix runs \$65/ton, ACE XP delivers \$16-20 in structure for \$10-15 in cost.



PERFORMANCE



EASE OF USE



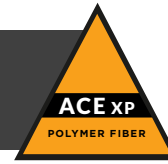
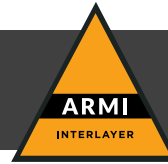
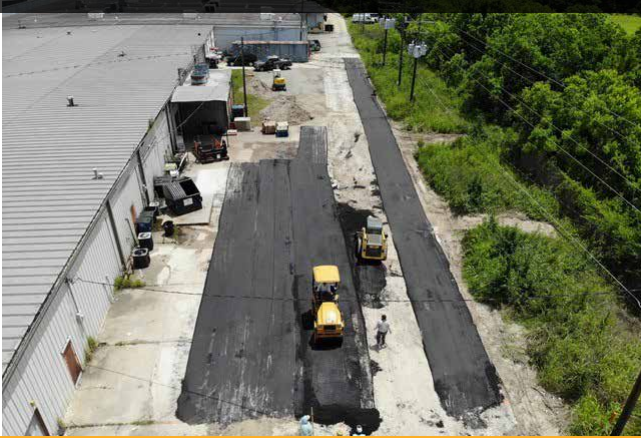
COST SAVINGS



SUSTAINABILITY

**SURFACE TECH™**

## PROVEN PERFORMANCE + COST SAVINGS



*I have been adding ACE XP™ to the plant since 2015. It is easy to use and just works, Louisville Metro is sold on the cracking performance increase of pavement reinforced with ACE XP Polymer Fiber™.*

Jordan Sandquist, PE,  
QA/QC Manager - Hall Paving, Louisville, KY

When a contractor doesn't have to change their protocols or processes, it makes it easier to consider using a new technology.

*Rose Paving constructed 100,000 square feet remove and replace, installing 6" asphalt pavement section utilizing Surface Tech's ACE XP™ polyaramid fibers supplied by Kiewit Infrastructure. Not only was the project finished faster than the original 8" design, Beacon Roofing saved \$34,615.44.*



Parking lot ACE XP overlay with ARMI Interlayer

ACE XP™ doubles the ESAL performance of any asphalt thickness.

- » **Ease of Use**
- » **Cost Savings**
- » **Crack resistance and life cycle performance**
- » **EPD Certified**

*You owe it to yourself, your projects, and your team to use ACE XP™.*

### The Surface Tech Advantage

Surface Tech is committed to developing the most advanced reinforcement for concrete and asphalt, not only adding strength and durability, but improving the sustainability of these materials. Our innovative processes, technologies and products make building materials better, stronger and longer-lasting. Extensive research and development, laboratory testing and field trials have proven the Surface Tech advantage. We are building a sustainable future.