

## City of Oshawa Cordova Road Repavement with ACE XP™

*City of Oshawa adopts ACE XP Polymer Fibers as a proven solution for paving better performing roads*

**LOCATION:**

Ontario, Canada

**DETAILS:**

Complete pavement removal and replacement.

**PRODUCT:**

ACE XP Polymer Fiber™

**DATE:**

July 2019

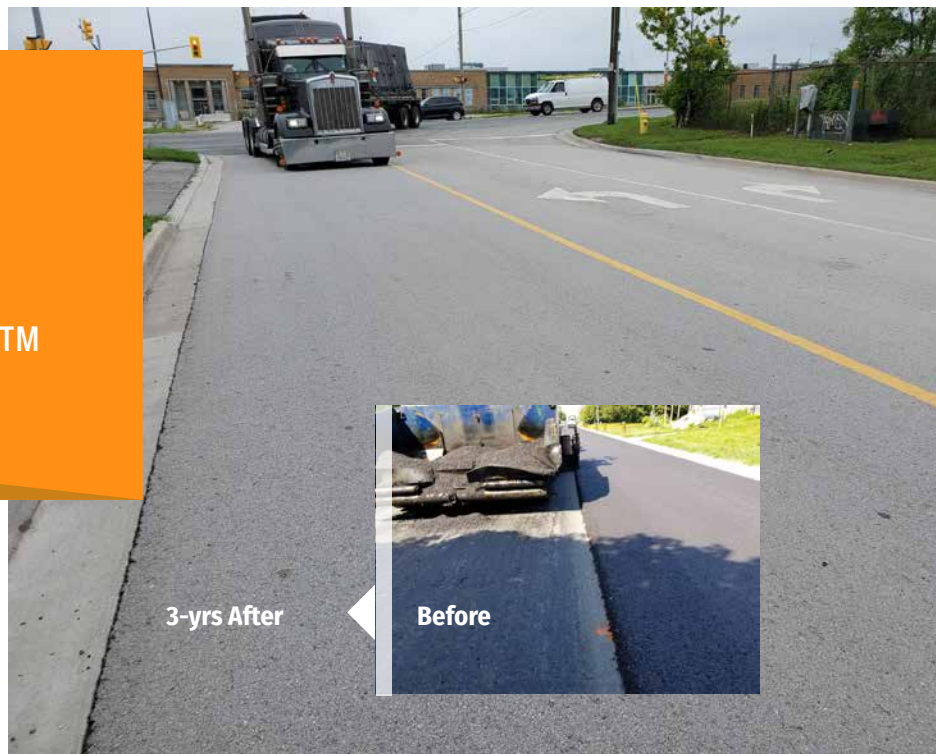
**CONTRACTOR:**

D. Crupi & Sons, Ltd.

**CLIENT/OWNER:**

City of Oshawa

Over a four-year period, Surface Tech proved that ACE XP Polymer Fibers™ can deliver the strength and durability needed to add longer lifespans to the city's roadways. As a result, the City of Oshawa utilizes ACE XP-reinforced mixes as a routine part of its annual pavement rehabilitation program.



### Challenge

In 2019, engineers designated Cordova Road for a complete pavement removal and replacement. Located near an automotive manufacturing plant, the road carries heavy traffic from trucks that caused the pavement to suffer extreme wear and tear. The decision to employ an ACE XP-reinforced asphalt mix was an easy one for the City, due to its successful use on other roadways.

### Solution

The two-day project included a full-depth removal of the existing asphalt and repaving with 865 tonnes of PG 64-28XJ mixes that included HL3 High Stability of 40mm thickness and a Heavy Duty Binder Course of 80mm and 50mm thicknesses. Surface Tech provided dosing services to paving contractor D.Crupi & Sons, which produced the mix at its asphalt plant.

*Cordova Road in Oshawa, Ontario, still shows little sign of wear even after three years and extreme punishment from heavy vehicles. It was this project among others over the past four years that have*



*convinced engineers for the City of Oshawa to include ACE XP Polymer Fibers™ as a routine part of its Annual Pavement Rehabilitation Program.*



**City of Oshawa  
Cordova Road  
Repavement with ACE XP™**

**Project Scope:**

**Full Depth Remove and Repave**

**865 tonnes of PG 64-28XJ**

**HL3 High Stability (40mm thick)**

**Heavy Duty Binder Course (80mm  
and 50mm thick)**

**One day of base course**

**One day of surface course**



2019: Day One - Binder



2019: Day Two - Surface



**Results**

In 2022, city engineers are entering their fifth year of experience with ACE XP and now place great confidence in its ability to significantly extend the life of roadways and decrease maintenance costs.



2021: 3-Years later with little sign of wear



**The Surface Tech Advantage**

Surface Tech is committed to developing the most advanced reinforcement solutions for asphalt, not only adding strength and durability, but improving the sustainability. Our innovative processes, technologies and products make asphalt pavements better, stronger and longer-lasting. Extensive research and development, laboratory testing and field trials have proven the Surface Tech advantage. We're paving the way to a sustainable future.

**SURFACE-TECH Construction Materials Corp**  
2080 Appleby Line / PO Box 75041 / Burlington / ON L7L 6M0 CANADA  
647.613.6988