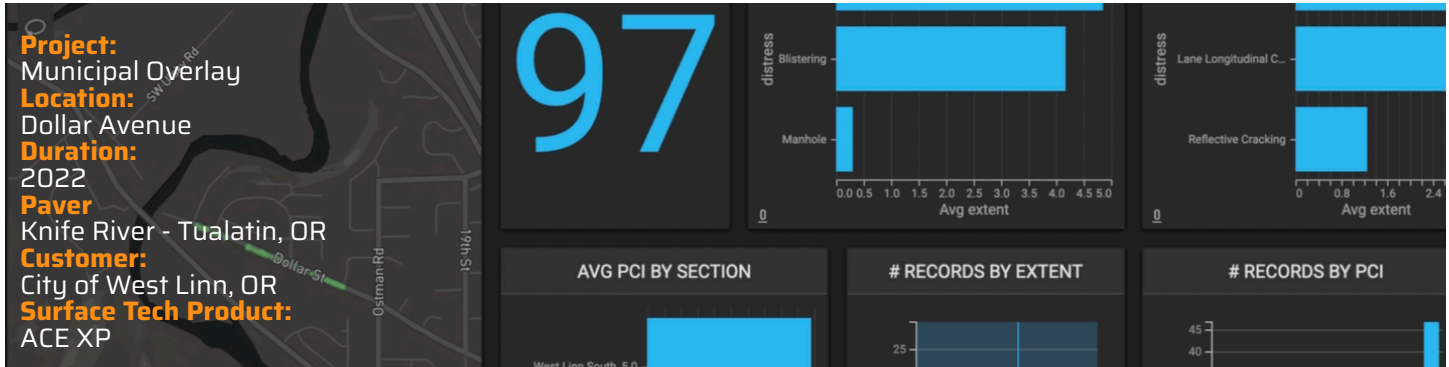


Case Study



City of West Linn - Dollar Avenue (2022)



Project Overview

In 2022, the City of West Linn selected Dollar Avenue for pavement rehabilitation. Rather than applying a standard overlay, the city incorporated ACE XP Aramid Polymer Fiber from Surface Tech to extend pavement life and reduce long-term maintenance. Knife River, using its Tualatin plant, produced the modified mix with real-time fiber dosing verification.

Traditional overlays typically require maintenance every 6-8 years and full rehabilitation within 15 years. With rising material and labor costs, West Linn needed a solution that could reduce long-term interventions and maximize taxpayer value.

Performance Results

PCI Score After 3 Years:

97 (verified via digital surface inspection)

Projected Service

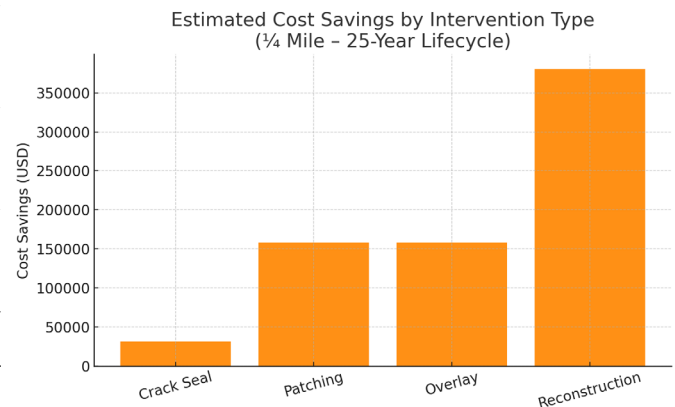
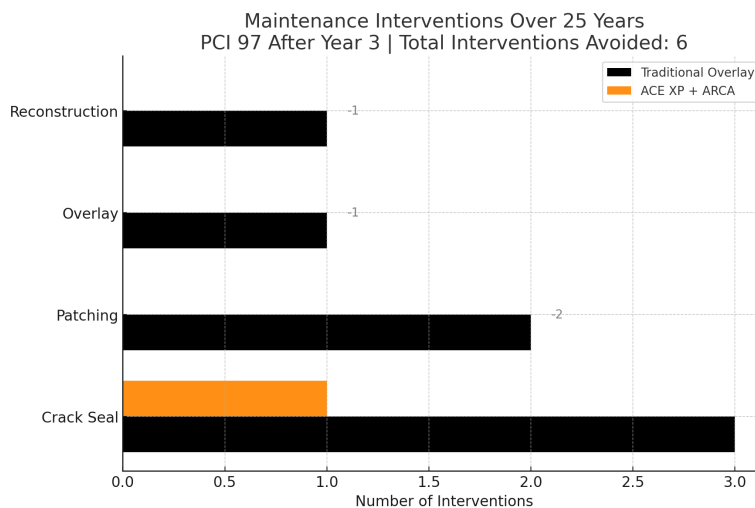
Life: 25 years maintaining PCI >80

Maintenance Interventions Avoided:

Up to 6 interventions over typical life-cycle

Estimated Life-cycle Cost Savings:

\$728,640 for a ¼-mile section



Surface Tech Contact:

312 S. Cedros Ave., S200, Solana Beach, CA 92075

+1-619-880-0265

info@surface-tech.com

www.surface-tech.com

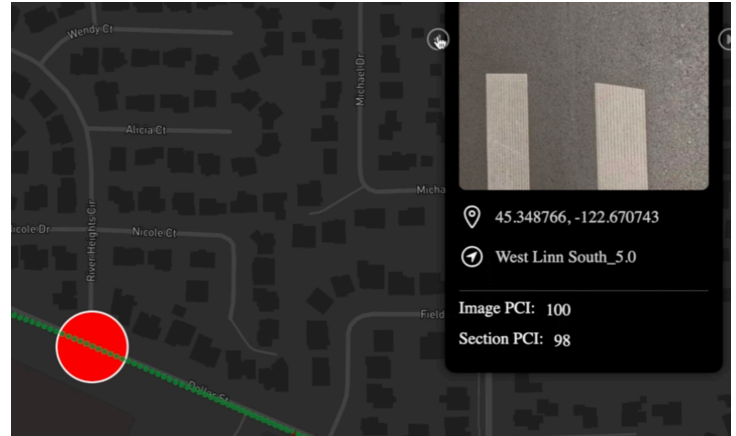
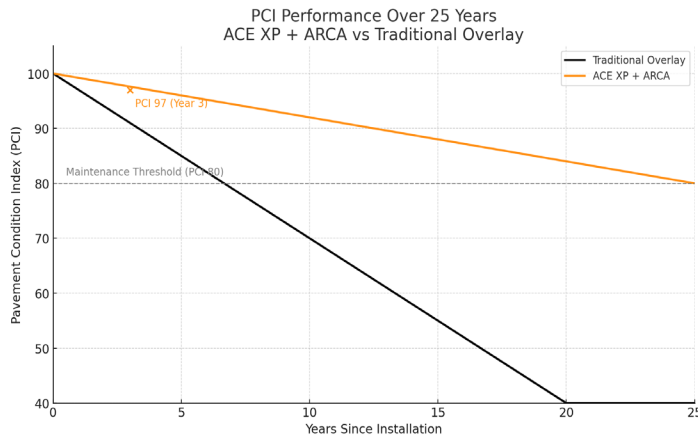


Case Study



PCI Performance Over 25 Years

The PCI graph demonstrates the superior durability of ACE XP + ARCA compared to traditional asphalt. Traditional overlays typically drop below the PCI 80 maintenance threshold within 8-10 years, requiring multiple interventions. In contrast, ACE XP maintains a PCI of 97 after year three and stays above 80 throughout the full 25-year lifecycle, reducing maintenance cycles and long-term costs for the city and taxpayers.



Impact for West Linn & Its Taxpayers

By specifying ACE XP with Knife River's support, the City of West Linn

- Delivered a high-performance roadway with minimal early maintenance needs
- Maximized long-term ROI on capital improvement dollars
- Reduced taxpayer disruption and city operational burden
- Set a new standard for sustainability and performance in municipal paving

Conclusion

The Dollar Avenue project serves as a successful model for municipalities seeking long-term value in their pavement investments. With ACE XP's field-verified performance and a PCI of 97 after three years, West Linn demonstrated a commitment to innovation, fiscal responsibility, and public benefit.

Surface Tech Contact:

312 S. Cedros Ave., S200, Solana Beach, CA 92075

+1-619-880-0265

info@surface-tech.com

www.surface-tech.com

