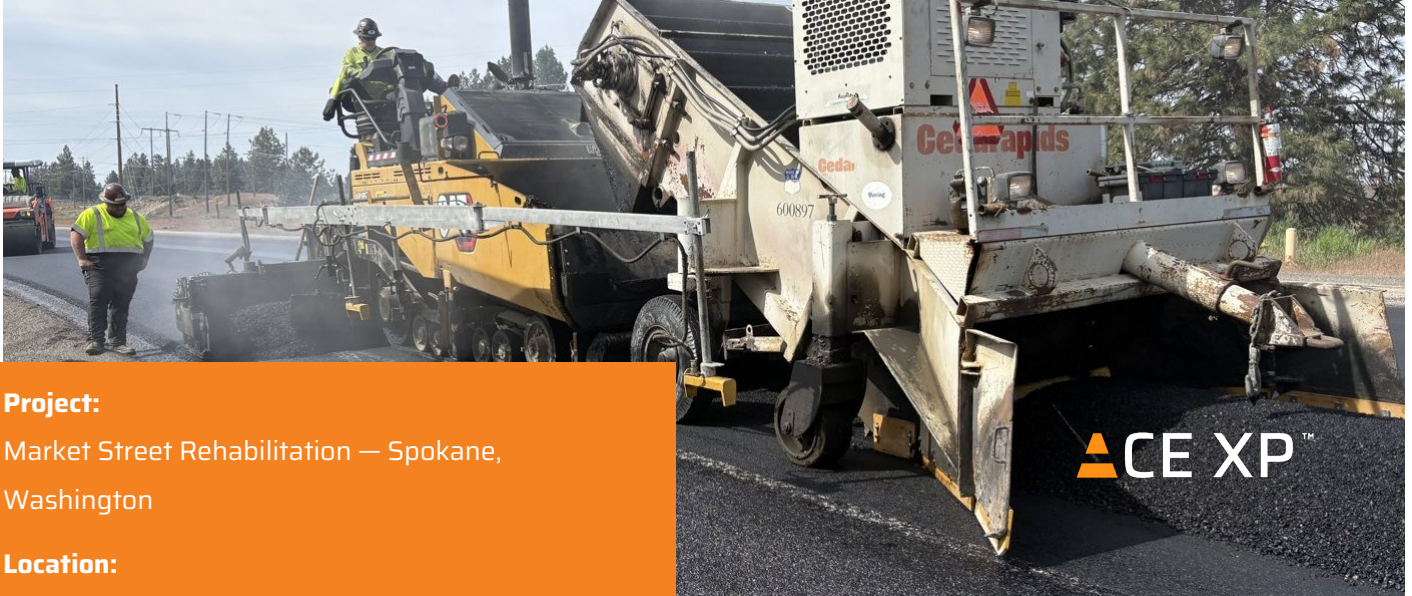


## Market Street Rehabilitation — Spokane, Washington



### Project:

Market Street Rehabilitation — Spokane, Washington

### Location:

Market Street, Spokane, Washington

### Date:

2026

### Contractor / Producer:

[PAVING CONTRACTOR — listed as White Cap in TRKR]

### Client:

[CLIENT]

### Surface Tech Product:

ACE XP™ 38mm Aramid Fiber (Single Dose)

## What We Did

In just two days in May 2026, the project team placed 3,300 tons of ACE XP aramid fiber-reinforced asphalt on Spokane's Market Street corridor — a high-production maintenance rehabilitation pairing Inland Asphalt's plant with a full paving train running material transfer equipment.

**Reinforced Mix:** A ½" PG 64H-28, 100-gyraton Superpave mix reinforced with ACE XP 38mm aramid fibers at a single dose, produced by Inland Asphalt.

**High-Production Placement:** 3,300 tons placed across a two-day window using a material transfer vehicle feeding the paver for continuous, uniform mat quality.

**Heavy-Duty Design:** A 100-gyraton, heavy-binder mix reinforced with aramid fiber — engineered for the corridor's traffic loading and Spokane's freeze-thaw climate.

### Surface Tech Contact:

806 S. Coast Highway 101, Encinitas, CA 92024

+1-619-880-0265

[info@surface-tech.com](mailto:info@surface-tech.com)

[www.surface-tech.com](http://www.surface-tech.com)



## Project Scope & Objectives

Market Street's aging surface needed a rehabilitation built to carry heavy urban traffic through Eastern Washington's hard winters. The project paired Inland Asphalt's ½" PG 64H-28 100-gradation production with ACE XP 38mm fiber reinforcement, placed at high production rates with a material transfer vehicle to deliver a consistent, well-compacted mat across 3,300 tons in a compressed two-day closure window.

## Challenges Overcome

The job started off rough — early production and logistics kinks tested the crew on day one — but the team worked through it and delivered the full 3,300 tons on schedule. The finished corridor drew great feedback from all parties, with the fiber-reinforced mix running cleanly through the plant and the full paving train by completion.



*Fresh ACE XP-reinforced mat behind the paver — Market Street, Spokane*

### Surface Tech Contact:

806 S. Coast Highway 101, Encinitas, CA 92024

+1-619-880-0265

[info@surface-tech.com](mailto:info@surface-tech.com)

[www.surface-tech.com](http://www.surface-tech.com)



## Economic & Environmental Advantages

- **Reinforced for Heavy Traffic:** Aramid fibers add three-dimensional tensile reinforcement throughout the mat, resisting rutting and cracking on a heavily trafficked urban corridor.
- **Cold-Climate Durability:** Fiber reinforcement paired with a PG 64H-28 binder resists the thermal cracking driven by Spokane's freeze-thaw cycles.
- **High-Production Compatibility:** Single-dose fiber addition kept pace with a 3,300-ton, two-day placement running a full material-transfer paving train.
- **No Process Changes:** ACE XP ran through Inland Asphalt's standard plant production and conventional paving equipment.
- **Lower Life-Cycle Costs:** Fiber reinforcement extends pavement life and reduces the frequency of future maintenance interventions.
- **Sustainable Pavement Design:** Extending service life reduces future construction impacts and greenhouse-gas emissions over the corridor's life.

## Client Feedback and Results

The team completed the full 3,300-ton placement within the two-day window — and the finished corridor earned great feedback from all parties involved. The reinforced Market Street section now serves as a high-visibility ACE XP reference project for the Inland Northwest.

### Surface Tech Contact:

806 S. Coast Highway 101, Encinitas, CA 92024

+1-619-880-0265

[info@surface-tech.com](mailto:info@surface-tech.com)

[www.surface-tech.com](http://www.surface-tech.com)



## Project Photos

Field documentation from JOB-2026-855 — 3,300 tons of ACE XP 38mm-reinforced mix placed May 20-21, 2026.



*Fiber dosing equipment integrated at Inland Asphalt's plant.*



*Plant-side fiber delivery feeding the production line.*

### Surface Tech Contact:

806 S. Coast Highway 101, Encinitas, CA 92024

+1-619-880-0265

[info@surface-tech.com](mailto:info@surface-tech.com)

[www.surface-tech.com](http://www.surface-tech.com)



# Case Study



*Steaming ACE XP-reinforced mat placed behind the paver.*



*The material transfer vehicle feeding reinforced mix to the paver hopper.*



*The full paving train at work on the Market Street corridor.*



*Uniform, well-compacted reinforced mat across the fresh placement.*

## Surface Tech Contact:

806 S. Coast Highway 101, Encinitas, CA 92024

+1-619-880-0265

[info@surface-tech.com](mailto:info@surface-tech.com)

[www.surface-tech.com](http://www.surface-tech.com)

